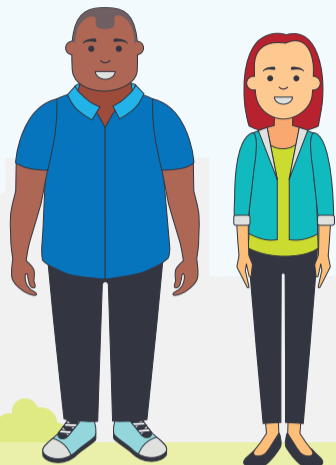


This poster describes how to enter a Specialist disability accommodation agreement.



Specialist disability accommodation is the home you will live in. We sometimes call it SDA.

When you live in Specialist disability accommodation, we call you an SDA resident.



Your Specialist disability accommodation is provided by an SDA provider.



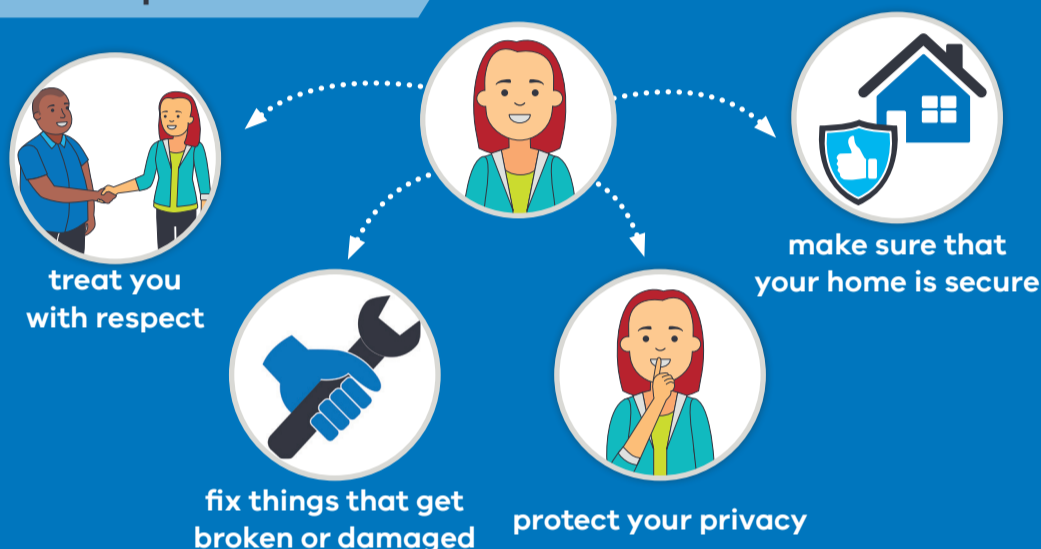
Your Specialist disability accommodation residency agreement is an agreement between you and your SDA provider.

Living in Specialist disability accommodation

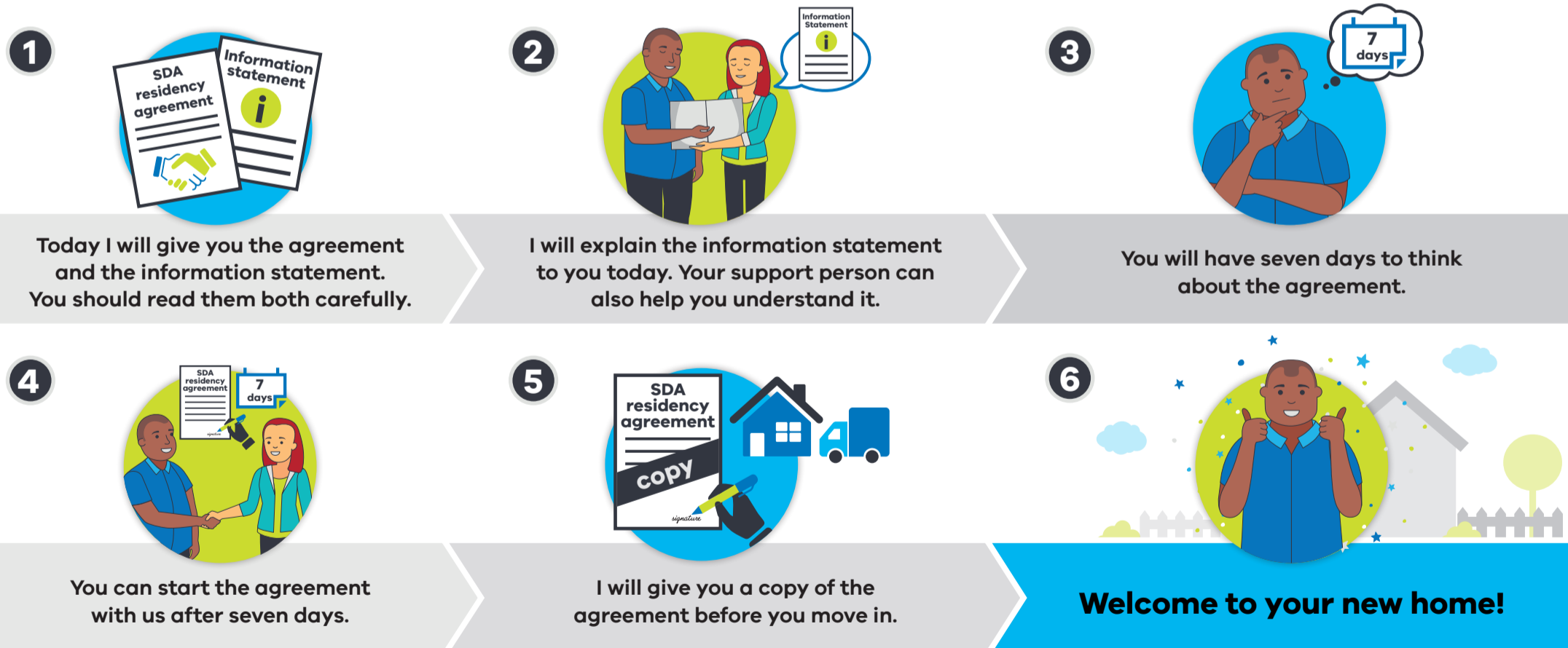
You must:



Your provider must:



Signing a Specialist disability accommodation agreement



Contact us



If you have any questions, you can contact Consumer Affairs Victoria on **1300 40 43 19**. The cost is the same as a local call.



If you use textphone or modem, call the National Relay Service on **133 677**. Give them our number – **1300 40 43 19**.



If you speak a language other than English, please contact TIS – Translating and Interpreting Service - **131 450**. Ask to talk to an Information Officer at Consumer Affairs Victoria on **1300 40 43 19**.



If you use speech to speech relay call **1300 555 727**. Give them our number – **1300 40 43 19**.